

CERTIFIED LAND CORNER RECORDATION

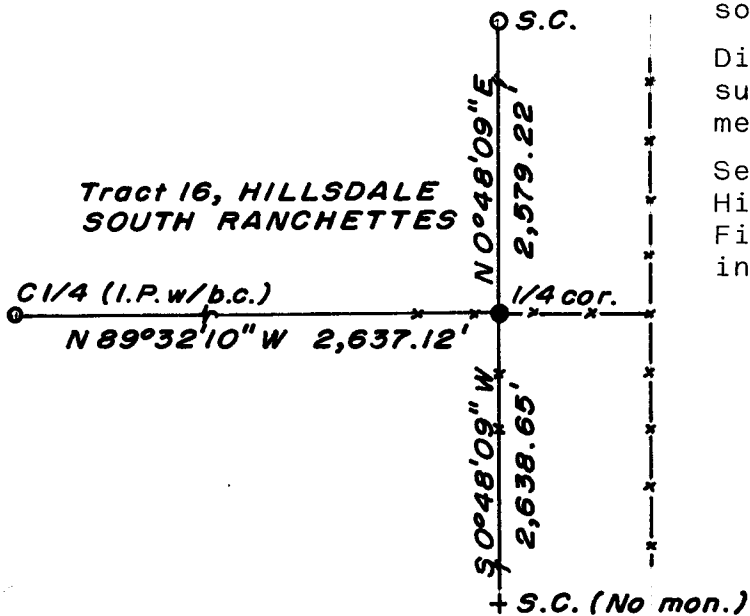
DESCRIPTION OF CORNER EVIDENCE FOUND, AND ORIGINAL RECORD (If known)

LOCATION No evidence of corner monument found.
 1/4 Corner re-established on straight line between section corners
 S.2 S.1 north and south and at fence corner for distance. The position
 T.13N., R.64W. thus established is in agreement with improvements and with the
 6th P.M. original G.L.O. calls, as nearly as can be determined.
 G.L.O. record - Set a Sand Stone 18 x 10 x 6 for quarter sec. cor.

DESCRIPTION OF MONUMENT AND ACCESSORIES ESTABLISHED
 TO PERPETUATE THE ORIGINAL LOCATION OF THIS CORNER:

At the corner: Set a 1 1/2" dia. x 30" long (Concrete-filled) iron pipe
 with brass cap.
 Accessories: None

SKETCH, WITH COURSE AND DISTANCE TO ADJACENT CORNER IF DETERMINED IN THIS SURVEY.
 (May Sketch or Paste Reproduction on Reverse Side.)



Basis of Bearing - By solar observation.

Distances based on measurements by electronic means.

See official plat of Hillsdale South Ranchettes, First Filing for additional information.



1" = 40'

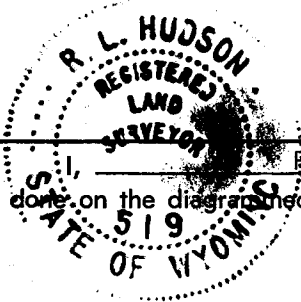
Brass cap set 6" above surface.

Brass cap stamped:

T.13N. R.64W.

1/4
 S.2 S.1

LS 519 1977



R. L. Hudson certify that I have carefully performed ~~or reviewed~~ the work done on the diagrammed corner as reported on this recordation form and approve the same.

R. L. Hudson Wyoming L.S. No. 519
 Signature of Surveyor Registration No.

STATE OF WYOMING,
 Office of Clerk and Recorder,
 County of Laramie

This "corner record" was filed for record on the 18 day of July, 1977, was noted on the cross-index plat and is assigned page No. _____, in book No. _____

James C. Whitehead
 County Official

Cross Index No. <u>C-21</u>	T. <u>13</u>	R. <u>64</u>	Mer.
_____	T. _____	R. _____	Mer.
_____	T. _____	R. _____	Mer.
_____	T. _____	R. _____	Mer.
_____	T. _____	R. _____	Mer.
_____	T. _____	R. _____	Mer.

446773

Photographed.....
Indexed.....
Posted.....
Assessor.....

